
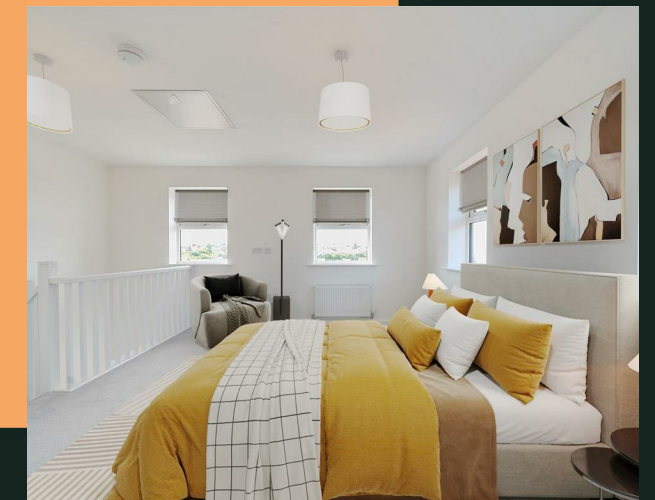
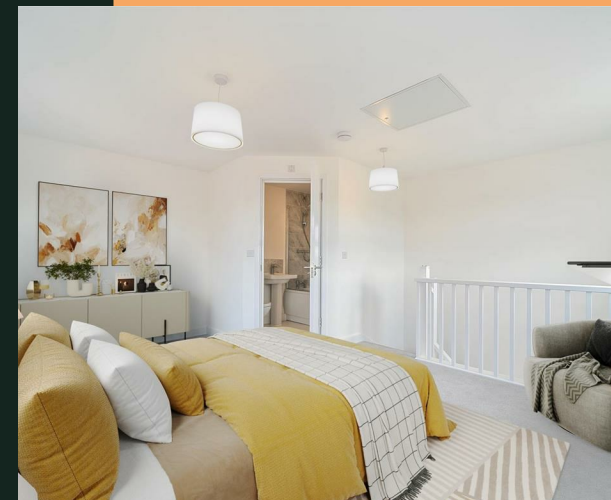


Ivy Approach, LS14

PROPERTY ADDRESS
15 Ivy Approach
Seacroft
Leeds
LS14 6HB

Energy Efficiency Rating		Current	Potential
<i>Very energy efficient - lower running costs</i>			
(92 plus) A			97
(81-91) B		84	
(69-80) C			
(55-68) D			
(39-54) E			
(21-38) F			
(1-20) G			
<i>Not energy efficient - higher running costs</i>			
England & Wales	EU Directive 2002/91/EC 		



Call Us
01132440251

Email Us
leeds@vision-properties.co.uk

vision

We look at
estate agency
differently.

vision

- Total cost of first month: £2,369.23 (rent & deposit)
- Unfurnished
- Available 10th February
- Recently-built
- Two bathrooms

We're pleased to offer this fantastic recently-built townhouse which briefly comprises of a ground floor double bedroom, downstairs house bathroom, first floor open plan living, kitchen and dining area, and second floor double bedroom with ensuite. The property is unfurnished but comes with blinds.

It's in a great location just off the York Road next to Seacroft hospital with easy access to Cross Gates and the city centre.

Available from 10th February, pending acceptable referencing.

Rent: £1,100 per calendar month

Deposit: £1,269.23

Holding deposit: £253.84

Please note that the photos are representative of this type of house and are for illustration. The furniture is not included - CGI images.

